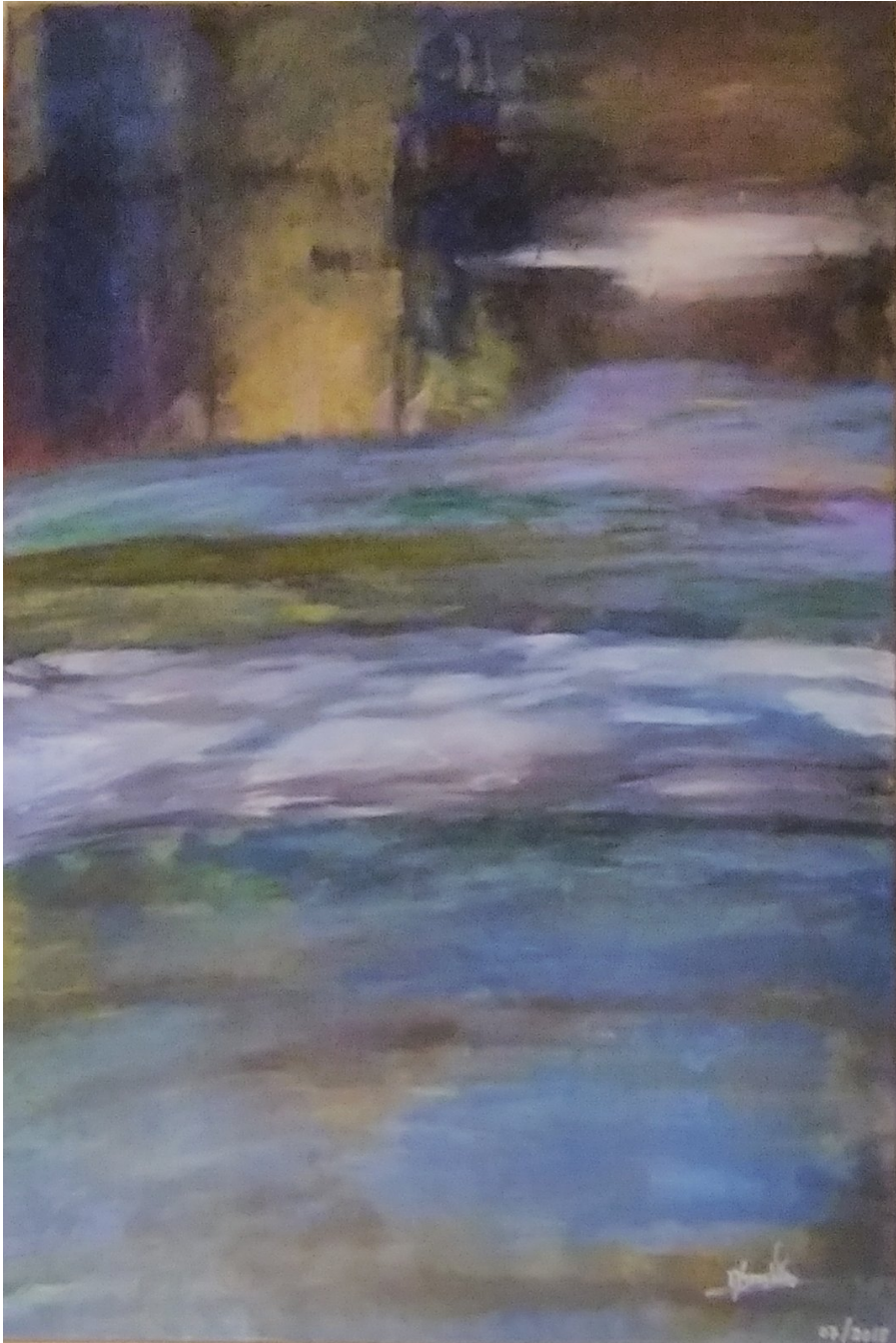


NELSON GONZALES

LIGHT PATH TO THE CHAMBER OF THE THRONE OF GOD FROM EARTH BELOW

Acrylic \$7,750.00 24 x 36 inches



History

It was July in the summer of 2018, in the spare of my school break, that I started this painting project. When I started, I wasn't sure if I could create a connection between heaven and earth through painting. I knew that clouds and light could be that connection; however, I wanted this link to be a meaningful experience to human life, and so after envisioning these links I thought that later a river could represent that; where the river, which means life, seeks down a path of quasi clarity the light of God above. "Fallen", as the world is characterized in the painting description, is not meant in the sense of condemnation, but imperfection; where the world finds itself in need of grace from heaven and ultimate redemption.

Description

This is mostly an abstract portrait piece constructed in acrylic, with tones of dark at the bottom to denote a formless fallen earth; feeble clarity of light emerges more as a calmed river flows forward seeking the light of God above atop unapparent clouds that leave the earth behind.